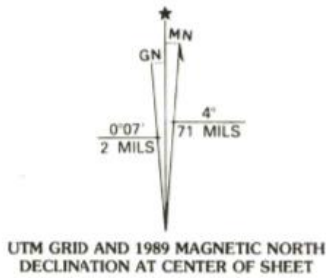
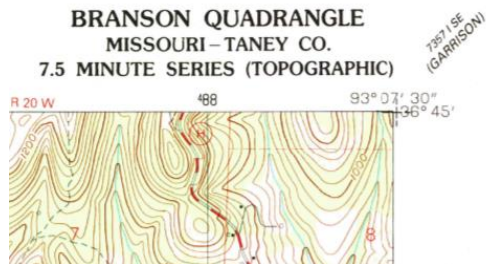


State Forestry 2019 Practicum 1




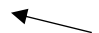


1. What does the GN stand for on the figure above?
 - A. Geographic North
 - B. Grid North
 - C. Geospatial North
 - D. Geodetic North
 - E. None of the above

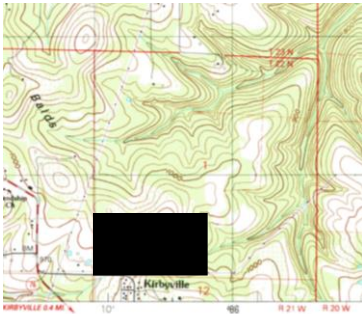


2. In the figure above, what does " stand for after the number 30?
 - A. Degrees
 - B. Seconds
 - C. Minutes
 - D. Range
 - E. Township



3. Which way is this creek flowing (can be found on your topo map at S36, T24N, R21W)

- A. 
- B. 
- C. 
- D. 
- E. None of the above



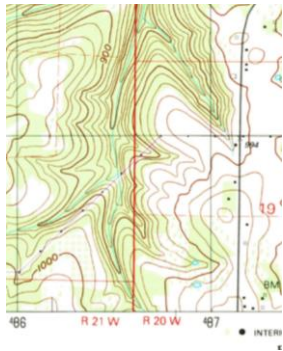
4. Which legally describes the parcel of land blackened in the above map?

- A. S1/2 of N1/2, S12, T22N, R21W
- B. S1, T23N, R21W
- C. S1/2 of SW1/4, S1, T22N, R21W
- D. S1/2 of SW1/4, S1, T23N, R21W
- E. S1/2 of S1/2, S1, T22N, R21W

5. What Township and Range is Merriam Woods in?

- A. T22N, R20W
- B. T24N, R20W
- C. T23N, R21W
- D. T23N, R20W
- E. T24N, R21W

6. How many acres are in an entire Township?
- 40
 - 320
 - 640
 - 10,460
 - 23,040
7. In a straight line measurement, how many miles apart are the radio tower in N1/2, S2, T22N, R21W and the quarry in SE1/4, S7, T23N, R21W?
- 3 miles
 - 3.5 miles
 - 4 miles
 - 5 miles
 - 5.5 miles



8. The darkened red line that separates R21W from R20 W is a _____.
- Baseline
 - Prime Meridian
 - Principal meridian
 - Central meridian
 - None of the above
9. What part of S31, T24N, R20W is the Mountain Grove Cemetery?
- NE1/4
 - NW1/4
 - SE1/4
 - SW1/4
 - None of the above

10. What elevation is the Mountain Grove Cemetery S31, T24N, R20W?

- A. 900'
- B. 860'
- C. 800'
- D. 940'
- E. None of the above



11. If you were out in a boat in this river and you were facing towards the shore (perhaps fishing along the bank), what should the bank topography look like? (This is the south eastern shore of the white river across from Rockaway beach on your topo map)

- A. A flat plane
- B. A very steep cliff
- C. A flat sandy beach
- D. A sand dune
- E. A slightly inclined hill



12. What do the above symbols represent on a topo map?

- A. Tanks
- B. Gaging stations
- C. Oil or gas platforms
- D. Campgrounds
- E. Athletic fields

13. What is the highest point in S32, T24N, R21W?

- A. 1000
- B. 1041
- C. 1222
- D. 900
- E. None of the above

14. How many miles due West of Chula Vista is Galena Missouri?
- A. 4.5
 - B. 15
 - C. 16
 - D. 17
 - E. 19
15. Areas covered by dashed light-blue pattern are subject to _____.
- A. Controlled inundation
 - B. Major flooding
 - C. Earthquakes
 - D. Avalanches
 - E. Forest fires
16. What is found near the bank of the river in NW1/4 of SW1/4, S22, T23N, R21W?
- A. Athletic field
 - B. Racetrack
 - C. Depression
 - D. Glacial retreat
 - E. Sandpit
17. What road dissects this map through Branson and can take you from Harrison Arkansas to Springfield Missouri?
- A. Interstate Route 65
 - B. U.S. Route 65
 - C. State Highway 65
 - D. All of these
 - E. None of these
18. How many acres are contained in the SE1/4 of NW1/4, S12, T23N, R21W?
- A. 20
 - B. 40
 - C. 80
 - D. 160
 - E. 320

19. What lake is found in SE1/4 of NW1/4, S12, T23N, R21W?

- A. Silver Creek Lake
- B. Beaver Lake
- C. Lake Taneycomo
- D. Turkey Creek Lake
- E. Edgewater Lake

20. Which has the highest elevation?

- A. Clark Airport S8, T22N, R21W
- B. Ozark Mountain Church S35, T24N, R21W
- C. Post Office in Walnut Shade S34, T24N, R21W
- D. Branson Hills Church S16, T23N, R21W
- E. Renshaw Cemetery S14, T23N, R21W

Key

1 B

2 B

3 B

4 C

5 C

6 E

7 E

8 C

9 A

10 D

11 B

12 A

13 C

14 E

15 A

16 B

17 B

18 B

19 A

20 B

