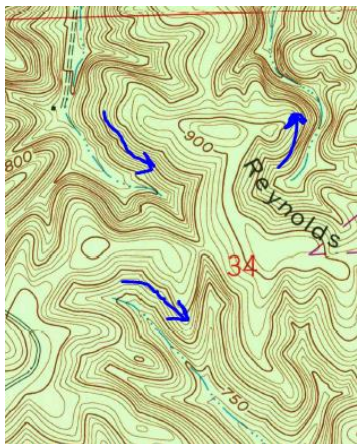


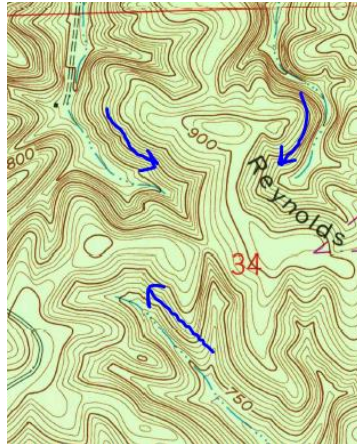
2021 State Forestry Map Exam Hindustan, IN Quadrangle

1. What describes best the 40 acre parcel labeled "State Forest" in S29, T10N, R1E?
 - A. SE1/4 of SW1/4, S29, T10N, R1E
 - B. NW1/4, S29, T10N, R1E
 - C. NW1/4 of SW 1/4, S29, T10N, R1E
 - D. SW1/4 of NW1/4, S29, T10N, R1E
2. What describes best the 120 acre parcel labeled "Morgan-Monroe State Forest" in S33, T10N, R1E?
 - A. W1/2 and NE1/4, S33, T10N, R1E
 - B. N1/2 and SW1/4 of SE1/4, S33, T10N, R1E
 - C. W1/2 and NE1/4 of SE1/4, S33, T10N, R1E
 - D. Both B and C are correct
3. What describes best the 80 acre parcel labeled "Morgan-Monroe State Forest" in S32, T10N, R1E?
 - A. NW1/4 of NE1/4, S 32, T10N, R1E
 - B. NE1/4 of NW1/4, S32, T10N, R1E
 - C. NE1/4 of NW1/4 and NW1/4 of NE1/4, S32, T1N, R1E
 - D. NW1/4 of NE1/4 and NE1/4 of NW1/4, S32, T10N, R1E

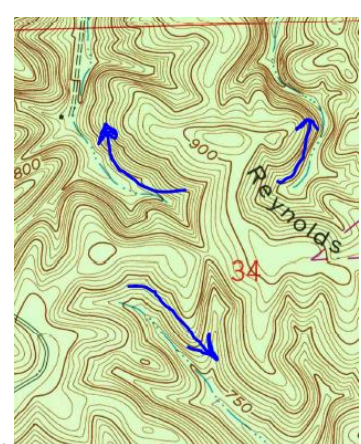
4. Which of the following illustrations indicate the correct way these creeks flow?



A.



B.



C.

- D. None of these are correct

5. What is the spillways elevation at Lake Lemon?
 - A. 600
 - B. 620
 - C. 630
 - D. 65

6. How far would you have to drive North on State Highway 37 to reach Indianapolis?
- A. 1.2 miles
 - B. 1.5 miles
 - C. 14 miles
 - D. 32 miles

7. What Township and Range is the town of Hindustan located?
- A. T10N, R1E
 - B. T10N, R1W
 - C. T11N, R1W
 - D. T11N, R1E

8. What road dissects S35, T11N, R1E
- A. Downey Road
 - B. North Shore Drive
 - C. Anderson Road
 - D. Peters Main

9. What is the elevation at the top of this hill



- A. 750
- B. 800
- C. 850
- D. 900

10. What type of vegetation does the light green shaded areas in this section indicate?



- A. Orchards
- B. Shrublands
- C. Woodlands
- D. Croplands

11. What does this dashed line with dots indicate?



- A. Power transmission line with poles
- B. Power transmission towers
- C. Telephone line
- D. Underground pipeline

12. What type of vegetation does the green dotted areas west of Hindustan indicate?



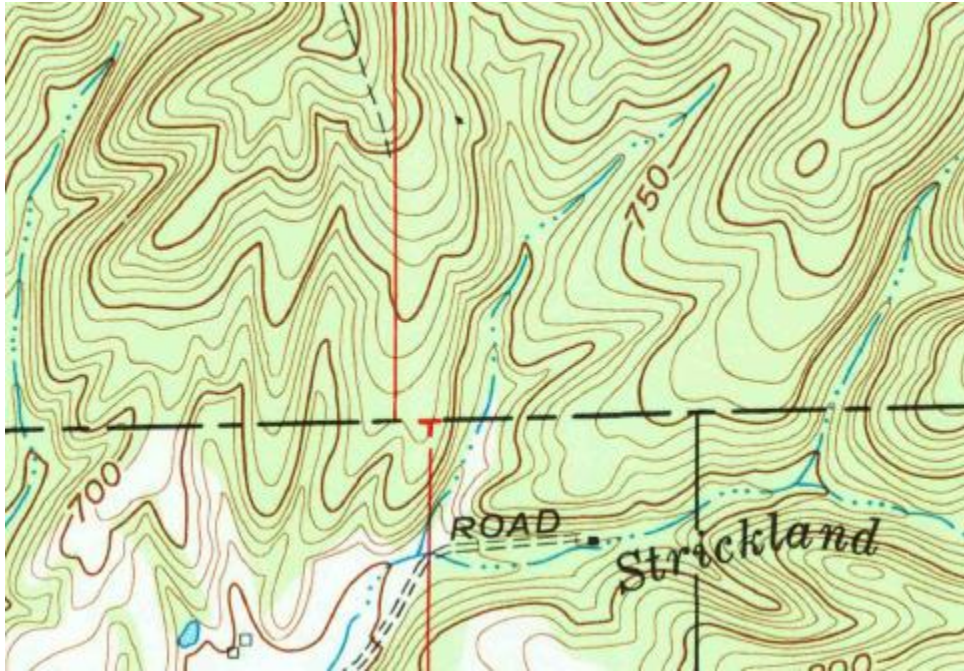
- A. Orchards
- B. Vineyards
- C. Woodlands
- D. Shrublands

13. If you were driving down Gose Creek Road travelling West, what would the terrain look like on your right-hand side as you drove through S32?



- A. Moderately Flat
- B. Slightly hilly
- C. Extremely Flat
- D. Extremely Steep

14. What type of boundary is the baseline?

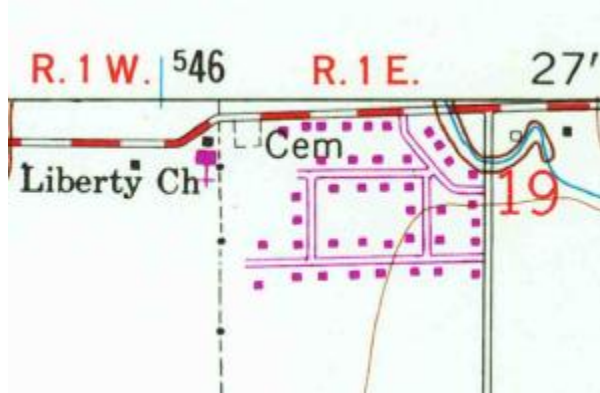


- A. State borderline
- B. County/Parish borderline
- C. Civil township borderline
- D. State forest/state park borderline

15. What county does Yellow Wood State Forest reside in S1, T10N, R1E?

- A. Morgan
- B. Monroe
- C. Brown
- D. Jackson

16. Why is this neighborhood and the Liberty Church symbol shown in purple?



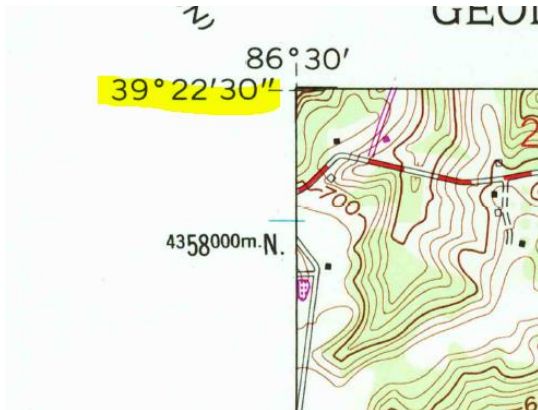
- A. Because it is from revised aerial photographs from 1977
- B. Because it is from original aerial photographs from 1939
- C. Because it is from revised aerial photographs from 1961
- D. Because it is from architectural plans drawn up in 1980

17. What type of waterway is this?



- A. Perennial river
- B. Perennial stream
- C. Intermittent river
- D. Intermittent stream

18. Highlighted is this maps latitude located in the top left corner. It is used to measure what?

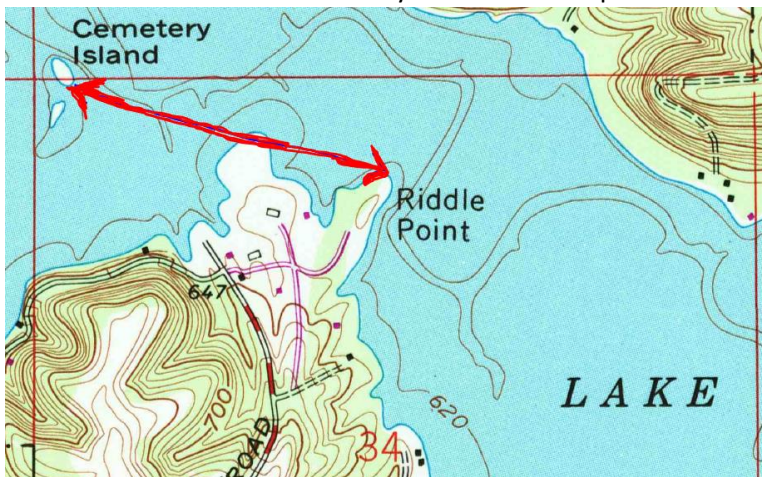


- A. North and South distances from the equator
- B. East and west distances from the Prime Meridian
- C. North and South Distances from the poles
- D. East and West distances from the equator

19. According to the scale, what does one inch on this map equal?

- A. 24,000 inches
- B. 24,000 meters
- C. 24,000 feet
- D. 24,000 miles

20. About how far is it from cemetery island to riddle point?



- A. About $\frac{1}{4}$ of a mile
- B. About $\frac{1}{2}$ of a mile
- C. About $\frac{3}{4}$ of a mile
- D. About 1 mile

KEY

1C

2D

3D

4C

5C

6D

7B

8A

9C

10C

11A

12A

13D

14B

15C

16A

17D

18A

19A

20B